

Engineering Innovation Pre-College Programs

UDC Commuter

Summer 2026





Agenda

1. Welcome!
2. Student Disability Services
3. Student Affairs
4. Enrollment Forms / Emails / TEAMS / Course Access
5. UDC Commuters

Student Disability Services

Summer 2026

Could SDS Support You?



Student Disabilities we have supported



Accommodation Categories

- Academic

How Do Students Request Accommodations from SDS?



complete this process as soon as possible

New students can begin the process of working with SDS online by following these steps:

1. Complete the **SDS online application** through our university-wide database, Accommodation Information Manager (AIM).
 - Select "EP – Engineering for Professionals (WSE)" as Primary School
2. Submit documentation after you submit the application.

Documentation is used to support the interactive process of exploring accommodation and services that will remove barriers. Our **Documentation Guidelines** provide information about what is needed to establish eligibility for services, and our **Documentation Form** can be completed by a qualified professional/provider. There is also **link to a web version of the form** that can be printed out.
3. **Schedule an Initial Meeting** to discuss your needs as well as potential accommodations and services.

SDS Advisor Contact Information



Dayna L. Geary, MS – Assistant Director
(she/her/hers)

- Email: ep-disability-svcs@jhu.edu
- Phone: 667-208-8268
- Website: <https://sds.jhu.edu/>

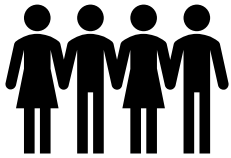


Student Affairs



Summer 2026




Student Affairs Welcome Video



Engineering Student Affairs
Offering Enrichment and Support While Advocating for Student-Centered Policies and Practices

 <p>Community Building/Student Engagement</p> <ul style="list-style-type: none">▶ Offering connection through community building programming and events	 <p>Student Support & Advocacy</p> <ul style="list-style-type: none">▶ Helping students navigate non-academic issues▶ Providing wraparound support to address barriers and concerns while supporting academic success
---	--

2





Community Building / Student Engagement

- Offering connection through community building programming and events

• Student Support & Advocacy

- Helping students navigate non-academic issues
- Providing wraparound support to address barriers and concerns while supporting academic success

Student Support & Advocacy

We help with non-academic issues, that may get in the way of being successful student, such as:

- Physical or mental health issues
- Family emergencies
- Interpersonal issues with faculty
- Concern or worry about a friend
- Referrals to Student Disability Services

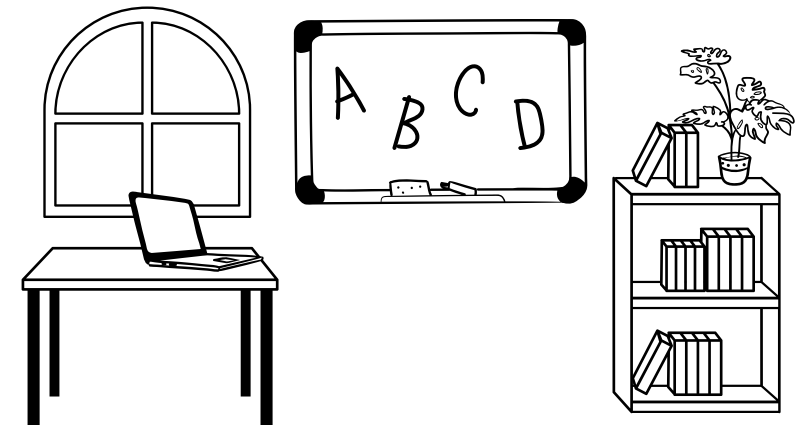
Engineering Student Affairs



Megan R. Barrett, Assistant Dean of Engineering Student Affairs

Mbarrett@jhu.edu

- **General Email:** WSEStudentAffairs@jhu.edu
- **Website:** <https://engineering.jhu.edu/studentaffairs/>



Enrollment Forms / Email / Teams

Summer 2026

Enrollment Forms (commuter)



1. Commuter Information
2. Emergency Contacts
3. Over the Counter Medications
4. Health History
 - Upload immunization record
 - Includes information about Accommodation Requests
5. Health Insurance
 - Upload copy of card
6. Healthcare Providers
7. Authorizations
 - Withdrawal and Refund Policy
 - Waiver – In-Person Program
 - Authorization to Disclose Pandemic-Related Health Status
 - Video and Photography Release
 - Confirmation of Health Insurance Coverage
8. Authorization for Treatment and Release of Medical Information
9. FERPA Release of Information – Minor
10. FERPA Recording of Virtual Class Sessions
12. Commuter Student Expectations
13. COVID-19 Expectations for Commuting and Residential Students
14. Time Management
15. Acknowledgement of Codes of Conduct

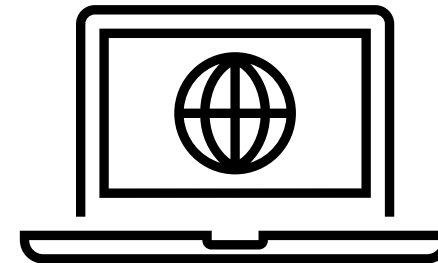


Email

- Johns Hopkins University's student email system is based on Microsoft Outlook.
- To access your Microsoft Outlook email from your smartphone or tablet, we recommend that you download the Microsoft Outlook App. When you are asked for your login information, use your JHED@JH.edu (not@jhu.edu) as the username.
- Can also be accessed through myJH (<https://my.jh.edu/>)
- **Start checking your Hopkins email account regularly as of today!**

Course access

- You can access Canvas using your JHED and password through Canvas at JHU main page starting the Friday before the course is set to begin: <https://canvas.jhu.edu/>



UDC Commuters

Summer 2026



UDC Commuter



4200 Connecticut Ave NW; Washington, DC

Mon – Fri: 9am – 3pm; No Class on July 3rd

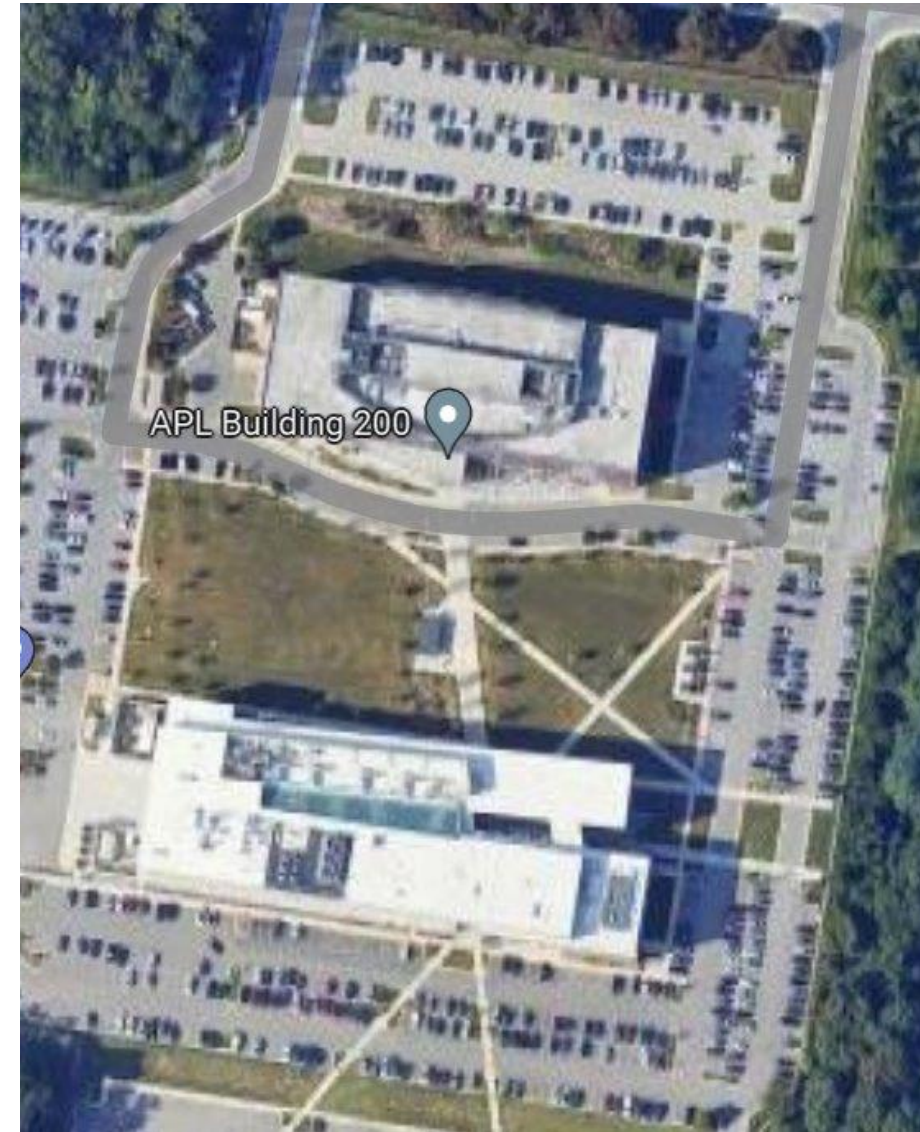
- Class will be held in Building 42. The room will be provided one week prior to starting the course.
- Paid parking available in the Van Ness Campus Garage (4200 Connecticut Avenue NW Washington, DC 20008).
- Before June 29 - Go to Cashiers Office (Building 39 – 2nd floor) for a temporary ID for the summer and a parking pass if necessary. They are open Tuesdays and Thursdays from 10am to 2pm.



UDC Commuter



- Bring a laptop, notebook, pens/pencils, and a calculator to class.
 - Chromebooks will not work on campus
- **Lab days for EEI students...** Closed-toe shoes are required and, on the chemical processes lab day, students must wear long pants and a long-sleeved shirt.
- **Weekly Schedule**
 - 9:00 – 12:00 PM Morning Academic Session
 - 12:00 – 1:00 PM Lunch
 - 1:00 – 3:00 PM Afternoon Academic Session
- *Evenings: 1 to 2 hours of homework



UDC Commuter



- Bring a laptop, notebook, pens/pencils, and a calculator to class.
- **EEI Students...** Closed-toe shoes are required and, on the chemical processes lab day, students must wear long pants and a long-sleeved shirt.
- **Students are not supervised before and after class and during the lunch period.**



UDC Commuter - Lunch



There is about an hour for lunch each day.

Students may bring a lunch, there is a microwave available for heating food from home. They may also visit the UDC campus Starbucks Café.

Students may walk in groups of at least three to Potbelly and Viet Chopsticks which are located on the west side of Connecticut Ave, just north of Building 42.

Students are not supervised before and after class and during the lunch period.



Libraries



- Online access to JHU Sheridan Libraries for all students
<https://www.library.jhu.edu/>



Campus Security



- Emergency number: 202-274-5050
- To receive emergency alerts, please download the [LiveSafe Mobile Safety app](#) and select UDC as the organization (it is open to all).





Students requiring medical assistance will be escorted to a local urgent care facility or hospital.

MedStar Health: Urgent Care at Capitol Hill

228 7th St SE, Washington, DC 20003 (855) 910-3278

24 hours/7 days

Sign Out Process (commuters)



- A parent/guardian contacts the Engineering Innovation office via email at ei@jhu.edu in advance if the student needs to leave class early.
- The student checks out with Engineering Innovation instructional staff before leaving.

Last Day Activities



- 10:00 AM
 - EEI - Spaghetti Bridge Ceremony
- 11:45 AM
 - Informal luncheon

Programming ends at 12:00pm.
Students can start making
arrangement to depart for home after
12:00pm.





JOHNS HOPKINS

WHITING SCHOOL
of ENGINEERING

ei.jhu.edu

ei@jhu.edu