

Engineering Innovation Pre-College Programs

Online Synchronous

Summer 2026





Agenda

1. Welcome!
2. Student Disability Services
3. Student Affairs
4. Enrollment Forms / Emails / TEAMS / Course Access
5. Online Synchronous

Student Disability Services

Summer 2026

Could SDS Support You?



Student Disabilities we have supported



Accommodation Categories

- Academic

How Do Students Request Accommodations from SDS?



complete this process as soon as possible

New students can begin the process of working with SDS online by following these steps:

1. Complete the **SDS online application** through our university-wide database, Accommodation Information Manager (AIM).
 - Select "EP – Engineering for Professionals (WSE)" as Primary School
2. Submit documentation after you submit the application.

Documentation is used to support the interactive process of exploring accommodation and services that will remove barriers. Our **Documentation Guidelines** provide information about what is needed to establish eligibility for services, and our **Documentation Form** can be completed by a qualified professional/provider. There is also **link to a web version of the form** that can be printed out.
3. **Schedule an Initial Meeting** to discuss your needs as well as potential accommodations and services.

SDS Advisor Contact Information



Dayna L. Geary, MS – Assistant Director
(she/her/hers)

- Email: ep-disability-svcs@jhu.edu
- Phone: 667-208-8268
- Website: <https://sds.jhu.edu/>

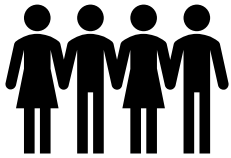


Student Affairs

Summer 2026



Student Affairs Welcome Video



A screenshot of a video slide. The slide has a dark blue header with the text "Engineering Student Affairs" and "Offering Enrichment and Support While Advocating for Student-Centered Policies and Practices". Below the header, there are two white boxes. The left box is titled "Community Building/Student Engagement" and contains an icon of a group of people and a bullet point: "Offering connection through community building programming and events". The right box is titled "Student Support & Advocacy" and contains an icon of a hand holding a heart and two bullet points: "Helping students navigate non-academic issues" and "Providing wraparound support to address barriers and concerns while supporting academic success". A small number "2" is in the bottom right corner of the slide. To the right of the slide is a video frame showing a woman with glasses and a dark blue top sitting at a wooden desk.



Community Building / Student Engagement

- Offering connection through community building programming and events

• Student Support & Advocacy

- Helping students navigate non-academic issues
- Providing wraparound support to address barriers and concerns while supporting academic success

Student Support & Advocacy

We help with non-academic issues, that may get in the way of being successful student, such as:

- Physical or mental health issues
- Family emergencies
- Interpersonal issues with faculty
- Concern or worry about a friend
- Referrals to Student Disability Services

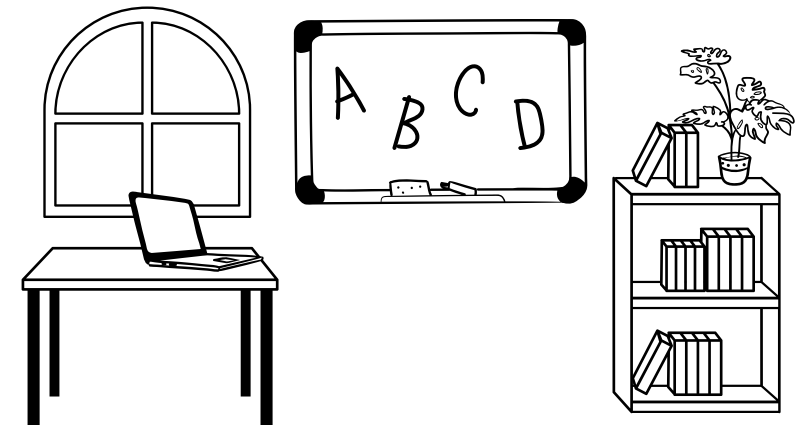
Engineering Student Affairs



Megan R. Barrett, Assistant Dean of Engineering Student Affairs

Mbarrett@jhu.edu

- **General Email:** WSEStudentAffairs@jhu.edu
- **Website:** <https://engineering.jhu.edu/studentaffairs/>



Enrollment Forms / Email / Teams

Summer 2026

Enrollment Forms (online)



1. Authorizations

- Withdrawal and Refund Policy
- Waiver – In-Person Program
- Video and Photography Release

2. FERPA Release of Information – Minor

3. FERPA Recording of Virtual Class Sessions

4. Time Management

5. Acknowledgement of Codes of Conduct

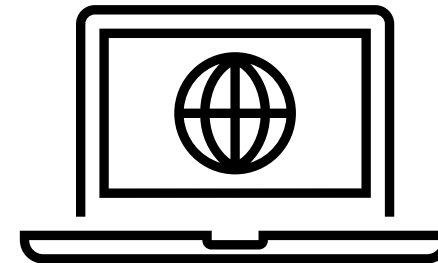


Email

- Johns Hopkins University's student email system is based on Microsoft Outlook.
- To access your Microsoft Outlook email from your smartphone or tablet, we recommend that you download the Microsoft Outlook App. When you are asked for your login information, use your JHED@JH.edu (not@jhu.edu) as the username.
- Can also be accessed through myJH (<https://my.jh.edu/>)
- **Start checking your Hopkins email account regularly as of today!**

Course access

- You can access Canvas using your JHED and password through Canvas at JHU main page starting the Friday before the course is set to begin: <https://canvas.jhu.edu/>



Online Synchronous

Summer 2026



EEI Dates and Class Structure



Explore Engineering Innovation

Course Dates: June 29 – July 31

Each course section has:

- Instructor
- Teaching Fellow
- Teaching Assistant

Students will receive a welcome email a week before the course begins with instructions on how to access course materials.

You registered for a distinct section/time; you are not able to switch between sections/times

Daily class meeting time

- 9 a.m. – Noon Eastern Time
- 2 p.m. – 5 p.m. Eastern Time
- 7 p.m. – 10 p.m. Eastern Time

Typical day:

- 1 hour of independent study
- 3 hours of online class
- 1.5 hours of homework

*Note: there is work that needs to be completed before your course begins on the first day.

SEE Dates and Class Structure



Sustainability Engineering Innovation

Course Dates: June 29 – July 31

Each course section has:

- Instructor
- Teaching Fellow
- Teaching Assistant

Students will receive a welcome email a week before the course begins with instructions on how to access course materials.

You registered for a distinct section/time; you are not able to switch between sections/times

Daily class meeting time

- 9 a.m. – Noon Eastern Time
- ~~2 p.m. – 5 p.m. Eastern Time~~
- 7 p.m. – 10 p.m. Eastern Time

Typical day:

- 1 hour of independent study
- 3 hours of online class
- 1.5 hours of homework

*Note: there is work that needs to be completed before your course begins on the first day.

EEI and SEE – Lab Kits

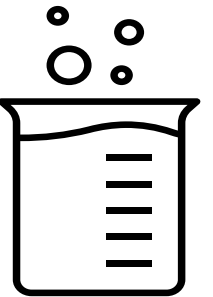


Lab Kits - If you have not yet placed your order for a lab kit, please do so today!

Quality Science Labs

- **EEI:** <https://www.qualitysciencelabs.com/johns-hopkins-engineering-innovation/>
- **SEE:** <https://qualitysciencelabs.com/collections/johns-hopkins-university-cty/products/jhu-sustainable-energy-engineering-kit>

Students outside of the United States must email orders@qualitysciencelabs.com or call 1-866-700-1884 to place the order.



EEI Students - You will need to provide a starch. You may wish to purchase better adhesive.

Once you receive your kit, please open it to verify that all required parts are included. For missing or broken parts, contact QSL at the email or phone # given on this slide.

Libraries



- Online access to JHU Sheridan Libraries for all students
<https://www.library.jhu.edu/>





JOHNS HOPKINS

WHITING SCHOOL
of ENGINEERING

ei.jhu.edu

ei@jhu.edu