

# Engineering Innovation Pre-College Programs

## Hood Commuter

Summer 2026





# Agenda

---

1. Welcome!
2. Student Disability Services
3. Student Affairs
4. Enrollment Forms / Emails / TEAMS / Course Access
5. Commuters

# **Student Disability Services**

**Summer 2026**

# Could SDS Support You?



## Student Disabilities we have supported



## Accommodation Categories

- Academic
- Dining

# How Do Students Request Accommodations from SDS?



\*complete this process as soon as possible\*

New students can begin the process of working with SDS online by following these steps:

1. Complete the **SDS online application** through our university-wide database, Accommodation Information Manager (AIM).
  - Select "EP – Engineering for Professionals (WSE)" as Primary School
2. Submit documentation after you submit the application.

Documentation is used to support the interactive process of exploring accommodation and services that will remove barriers. Our **Documentation Guidelines** provide information about what is needed to establish eligibility for services, and our **Documentation Form** can be completed by a qualified professional/provider. There is also **link to a web version of the form** that can be printed out.
3. **Schedule an Initial Meeting** to discuss your needs as well as potential accommodations and services.

# SDS Advisor Contact Information



Dayna L. Geary, MS – Assistant Director  
(she/her/hers)

- Email: [ep-disability-svcs@jhu.edu](mailto:ep-disability-svcs@jhu.edu)
- Phone: 667-208-8268
- Website: <https://sds.jhu.edu/>

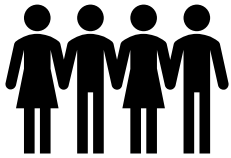


# Student Affairs



Summer 2026




# Student Affairs Welcome Video



**Engineering Student Affairs**  
Offering Enrichment and Support While Advocating for Student-Centered Policies and Practices

 <p><b>Community Building/Student Engagement</b></p> <ul style="list-style-type: none"><li>▶ Offering connection through community building programming and events</li></ul>	 <p><b>Student Support &amp; Advocacy</b></p> <ul style="list-style-type: none"><li>▶ Helping students navigate non-academic issues</li><li>▶ Providing wraparound support to address barriers and concerns while supporting academic success</li></ul>
---	--

2





## Community Building / Student Engagement

- Offering connection through community building programming and events

## • Student Support & Advocacy

- Helping students navigate non-academic issues
- Providing wraparound support to address barriers and concerns while supporting academic success

## Student Support & Advocacy

We help with non-academic issues, that may get in the way of being successful student, such as:

- Physical or mental health issues
- Family emergencies
- Interpersonal issues with faculty
- Concern or worry about a friend
- Referrals to Student Disability Services

# **Enrollment Forms / Email / Teams**

**Summer 2026**

# Enrollment Forms (commuter)



1. General Information
2. Emergency Contacts
3. Over the Counter Medications
4. Health History
  - Upload immunization record
  - Includes information about Accommodation Requests
5. Health Insurance
  - Upload copy of card
6. Healthcare Providers
7. Authorizations
  - Withdrawal and Refund Policy
  - Waiver – In-Person Program
  - Authorization to Disclose Pandemic-Related Health Status
  - Video and Photography Release
  - Confirmation of Health Insurance Coverage
8. Authorization for Treatment and Release of Medical Information
9. FERPA Release of Information – Minor
10. FERPA Recording of Virtual Class Sessions
11. Commuter Student Expectations
12. COVID-19 Expectations for Commuting and Residential Students
13. Time Management
14. Acknowledgement of Codes of Conduct

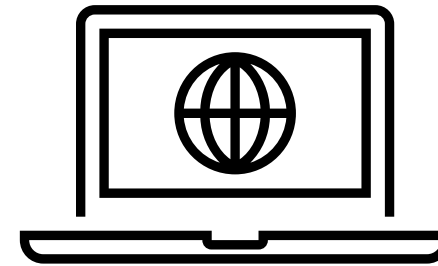


## Email

- Johns Hopkins University's student email system is based on Microsoft Outlook.
- To access your Microsoft Outlook email from your smartphone or tablet, we recommend that you download the Microsoft Outlook App. When you are asked for your login information, use your JHED@JH.edu (not@jhu.edu) as the username.
- Can also be accessed through myJH (<https://my.jh.edu/>)
- **Start checking your Hopkins email account regularly as of today!**

## Course access

- You can access Canvas using your JHED and password through Canvas at JHU main page starting a few days before the course is set to begin: <https://canvas.jhu.edu/>



# Microsoft Teams



- **Students will communicate with their Residential Counselors through the Microsoft Teams app.**
- **You will log-in using your JHED ID credentials**
  - NOTE: Please use your JhedID@jh.edu email as your username. NOT jhu.edu.
  - You will then be directed to the JH Authentication page. A Microsoft account is not required.

## Get the Teams mobile app

Connect and communicate on the go by accessing Teams on your mobile device.



Try another option if you're having trouble with the QR code [?](#)

# Commuters

Summer 2026





# Commuter (in-person)



- Bring a laptop, notebook, pens/pencils, and a calculator to class.
- **EEI Students...** Closed-toe shoes are required and, on the chemical processes lab day, students must wear long pants and a long-sleeved shirt.
- Students are not supervised before and after class and during the lunch period.



# Sample Schedule



## During the week

9:00 – 11:30 AM Morning Academic Session  
11:30 – 12:30 PM Lunch  
12:30 – 3:00 PM Afternoon Academic Session



# Libraries



- Online access to JHU Sheridan Libraries for all students  
<https://www.library.jhu.edu/>
- Hood College
  - Beneficial-Hodson Library and Learning Commons



# Campus Security



- Hood College
- Emergency number: 301-696-3111
- Non-emergency number: 301-696-3548
- RAVE Emergency Text Message System– subscribe:
- Text HoodAlert2020 to 225-787





- Students requiring medical assistance will be escorted to a local urgent care facility or hospital.
- **U.N.I. Urgent Care Center**  
Address: 1305 W 7th St #28, Frederick, MD 21702  
Hours: Sat and Sun 8am to 6pm and Mon-Fri 8am to 8:30pm  
Phone: (301) 228-3600
- **Frederick Health Hospital**  
Address: 400 W 7th St, Frederick, MD 21701  
Phone: (240) 566-3300  
Open 24 hours

# Sign Out Process (commuters)

---



- A parent/guardian contacts the Engineering Innovation office via email at [ei@jhu.edu](mailto:ei@jhu.edu) in advance if the student needs to leave class early.
- The student checks out with Engineering Innovation instructional staff before leaving.

# Last Day Activities



- 10:00 AM
  - EEI - Spaghetti Bridge Ceremony
- 11:45 AM
  - Informal luncheon

Programming ends around 12:00pm. Students can start making arrangement to depart for home after 12:00pm.





JOHNS HOPKINS

WHITING SCHOOL  
*of* ENGINEERING

**ei.jhu.edu**

ei@jhu.edu