

Engineering Innovation Pre-College Programs

Homewood Commuter

Summer 2026





Agenda

1. Welcome!
2. Student Disability Services
3. Student Affairs
4. Enrollment Forms / Emails / TEAMS / Course Access
5. Commuters

Student Disability Services

Summer 2026

Could SDS Support You?



Student Disabilities we have supported



Accommodation Categories

- Academic
- Dining

How Do Students Request Accommodations from SDS?



complete this process as soon as possible

New students can begin the process of working with SDS online by following these steps:

1. Complete the **SDS online application** through our university-wide database, Accommodation Information Manager (AIM).
 - Select "EP – Engineering for Professionals (WSE)" as Primary School
2. Submit documentation after you submit the application.

Documentation is used to support the interactive process of exploring accommodation and services that will remove barriers. Our **Documentation Guidelines** provide information about what is needed to establish eligibility for services, and our **Documentation Form** can be completed by a qualified professional/provider. There is also **link to a web version of the form** that can be printed out.
3. **Schedule an Initial Meeting** to discuss your needs as well as potential accommodations and services.

Homewood Accessibility Map



Link to Accessibility Map:

[JHU Homewood Accessibility Map](#)

Link to Mobile App:

[JHU Homewood Mobile Map](#)

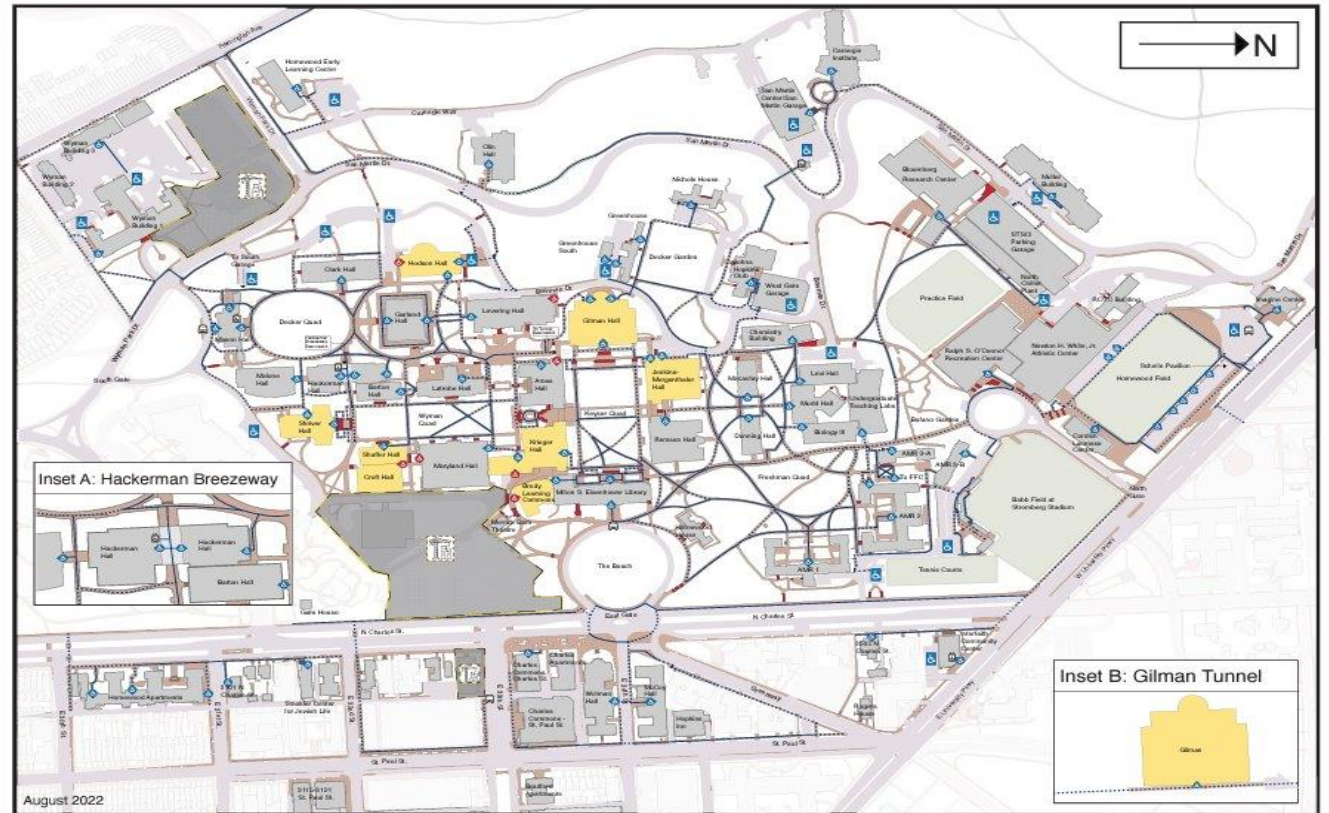
Map Key

- Accessible Building Entrance
- Accessible Building Entrance (not located on an accessible route)
- Accessible parking available
- ADA compliant pathway*
- Usable pathway** (no steps and moderately steeper slopes)
- Shuttle drop-off location***
- Exterior and/or underground elevator access
- Construction Zone
- Use elevator in building to access different levels of campus
- Stairway
- Building

* ADA compliant pathway: running slope does not exceed 5% and cross slope does not exceed 2% along travel path.

** Usable pathway: running slope is between 5% and 8% and cross slope is between 2% and 4.5% along travel path.

*** Curb to curb shuttle service is available upon request. Please call JHU Transportation Services at 410-516-4200



Accessible Routes for Homewood Campus
Some accessibility routes shown on this map are located on properties not owned by the University and are shown for informational purposes only.



SDS Advisor Contact Information



Dayna L. Geary, MS – Assistant Director
(she/her/hers)

- Email: ep-disability-svcs@jhu.edu
- Phone: 667-208-8268
- Website: <https://sds.jhu.edu/>

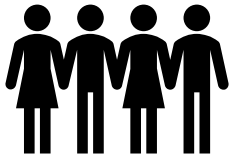


Student Affairs


Summer 2026




Student Affairs Welcome Video



Engineering Student Affairs
Offering Enrichment and Support While Advocating for Student-Centered Policies and Practices

 <p>Community Building/Student Engagement</p> <ul style="list-style-type: none">▶ Offering connection through community building programming and events	 <p>Student Support & Advocacy</p> <ul style="list-style-type: none">▶ Helping students navigate non-academic issues▶ Providing wraparound support to address barriers and concerns while supporting academic success
---	--

2

A video frame showing a woman with glasses and a dark blue top sitting at a wooden desk, speaking.



Community Building / Student Engagement

- Offering connection through community building programming and events

• Student Support & Advocacy

- Helping students navigate non-academic issues
- Providing wraparound support to address barriers and concerns while supporting academic success

Student Support & Advocacy

We help with non-academic issues, that may get in the way of being successful student, such as:

- Physical or mental health issues
- Family emergencies
- Interpersonal issues with faculty
- Concern or worry about a friend
- Referrals to Student Disability Services

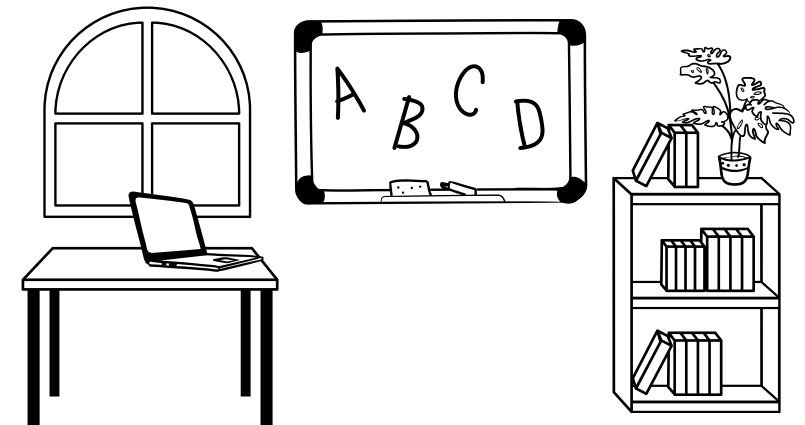
Engineering Student Affairs



Megan R. Barrett, Assistant Dean of Engineering Student Affairs

Mbarrett@jhu.edu

- **General Email:** WSEStudentAffairs@jhu.edu
- **Website:** <https://engineering.jhu.edu/studentaffairs/>



Enrollment Forms / Email / Teams

Summer 2026

Enrollment Forms (commuter)



1. General Information
2. Emergency Contacts
3. Over the Counter Medications
4. Health History
 - Upload immunization record
 - Includes information about Accommodation Requests
5. Health Insurance
 - Upload copy of card
6. Healthcare Providers
7. Authorizations
 - Withdrawal and Refund Policy
 - Waiver – In-Person Program
 - Authorization to Disclose Pandemic-Related Health Status
 - Video and Photography Release
 - Confirmation of Health Insurance Coverage
 - Meningococcal Vaccine Waiver
8. Authorization for Treatment and Release of Medical Information
9. FERPA Release of Information – Minor
10. FERPA Recording of Virtual Class Sessions
11. Recreation Center Membership & Acknowledgement Form
12. Commuter Student Expectations
13. COVID-19 Expectations for Commuting and Residential Students
14. Time Management
15. Acknowledgement of Codes of Conduct

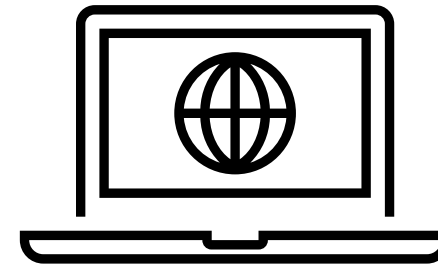


Email

- Johns Hopkins University's student email system is based on Microsoft Outlook.
- To access your Microsoft Outlook email from your smartphone or tablet, we recommend that you download the Microsoft Outlook App. When you are asked for your login information, use your JHED@JH.edu (not@jhu.edu) as the username.
- Can also be accessed through myJH (<https://my.jh.edu/>)
- **Start checking your Hopkins email account regularly as of today!**

Course access

- You can access Canvas using your JHED and password through Canvas at JHU main page starting the Friday before the course is set to begin: <https://canvas.jhu.edu/>



Microsoft Teams



- **Students will communicate with their Residential Counselors through the Microsoft Teams app.**
- **You will log-in using your JHED ID credentials**
 - NOTE: Please use your JhedID@jh.edu email as your username. NOT jhu.edu.
 - You will then be directed to the JH Authentication page. A Microsoft account is not required.

Get the Teams mobile app

Connect and communicate on the go by accessing Teams on your mobile device.



Try another option if you're having trouble with the QR code ⓘ

Commuters

Summer 2026



Commuter (in-person)



- Class will be held in Latrobe, Maryland, Clark, Krieger, Shaffer, and Wyman Park Buildings
- **First Day:** All students will meet at 8:45am in Hodson Hall. The room will be announced the week before the course starts.
- Monday – Friday: 9am – 3pm
- Lunch included at Nolans Café
 - Dietary restrictions and allergies: provide this information on your Health History Form
- Parking passes may be purchased through the JHU Parking Office - <https://ts.jhu.edu/Parking/>
- Convenient drop off is at Mason Hall 3101 Wyman Park Drive



Commuter (in-person)



- Bring a laptop, notebook, pens/pencils, and a calculator to class.
- **EEI Students...** Closed-toe shoes are required and, on the chemical processes lab day, students must wear long pants and a long-sleeved shirt.
- Students are not supervised before and after class and during the lunch period.



J-Card



- Photo ID and J-Cash
- Upload photo to SIS for your ID
- If lost – there is a replacement fee



Sample Schedule



During the week

9:00 – 11:40 AM Morning Academic Session
11:45 – 12:45 PM Lunch
12:50 – 3:00 PM Afternoon Academic Session
3:15 – 4:00 PM Special Lectures (Mon,Tues,Thur)

Rec Center, Fields, & Courts

4:00 – 8:00 PM Mon – Fri

Bloomberg Student Center

3:00 – 5:00 PM Mon – Fri
10:00 – 5:00 PM Sat – Sun



Libraries



- Online access to JHU Sheridan Libraries for all students
<https://www.library.jhu.edu/>
- JHU Homewood
 - Brody Learning Commons
 - Study spaces
 - Books to consult/borrow
 - Print/Copy/Scan



Campus Security



- 24-hr security at entrance to Scott-Bates Commons
- JHU Security emergency number:
 - 410-516-4600
- Download the LiveSafe App onto your cellphone
- RAVE Emergency Text Message System - subscribe: Text JHUMhomewoodAlerts to 226-787
- <https://publicsafety.jhu.edu/>



Health and Medical



- Students requiring medical assistance will be escorted to a local urgent care facility or to the Medstar Union Memorial Hospital, which is located adjacent to the Johns Hopkins campus.
- UM Urgent Care at Rotunda
711 W. 40th St, Suite 173; Baltimore 443-961-1221
Mon – Sun. 8am-8pm
- MedStar Union Memorial Hospital Emergency Room
201 E. University Parkway; Baltimore 410-554-2000
24 hours/7 days

Sign Out Process (commuters)



- A parent/guardian contacts the Engineering Innovation office via email at ei@jhu.edu in advance if the student needs to leave class early.
- The student checks out with Engineering Innovation instructional staff before leaving.

Last Day Activities



- 10:00 AM
 - EEI - Spaghetti Bridge Ceremony
- 10:30 AM
 - SEE - Final Project Poster Session
 - Research – Final Project Poster Session
- 11:45 AM
 - Informal luncheon

Programming ends at 12:00pm. Students can start making arrangement to depart for home after 12:00pm.





JOHNS HOPKINS

WHITING SCHOOL
of ENGINEERING

ei.jhu.edu

ei@jhu.edu