

Engineering Innovation Pre-College Programs

APL Commuter

Summer 2026





Agenda

1. Welcome!
2. Student Disability Services
3. Student Affairs
4. Enrollment Forms / Emails / TEAMS / Course Access
5. APL Commuters

Student Disability Services

Summer 2026

Could SDS Support You?



Student Disabilities we have supported



Accommodation Categories

- Academic

How Do Students Request Accommodations from SDS?



complete this process as soon as possible

New students can begin the process of working with SDS online by following these steps:

1. Complete the **SDS online application** through our university-wide database, Accommodation Information Manager (AIM).
 - Select "EP – Engineering for Professionals (WSE)" as Primary School
2. Submit documentation after you submit the application.

Documentation is used to support the interactive process of exploring accommodation and services that will remove barriers. Our **Documentation Guidelines** provide information about what is needed to establish eligibility for services, and our **Documentation Form** can be completed by a qualified professional/provider. There is also **link to a web version of the form** that can be printed out.
3. **Schedule an Initial Meeting** to discuss your needs as well as potential accommodations and services.

SDS Advisor Contact Information



Dayna L. Geary, MS – Assistant Director
(she/her/hers)

- Email: ep-disability-svcs@jhu.edu
- Phone: 667-208-8268
- Website: <https://sds.jhu.edu/>

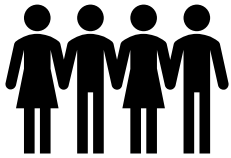


Student Affairs



Summer 2026




Student Affairs Welcome Video



Engineering Student Affairs
Offering Enrichment and Support While Advocating for Student-Centered Policies and Practices

 <p>Community Building/Student Engagement</p> <ul style="list-style-type: none">▶ Offering connection through community building programming and events	 <p>Student Support & Advocacy</p> <ul style="list-style-type: none">▶ Helping students navigate non-academic issues▶ Providing wraparound support to address barriers and concerns while supporting academic success
---	--

2

A video frame showing a woman with glasses and a dark blue top sitting at a wooden desk, speaking directly to the camera.



Community Building / Student Engagement

- Offering connection through community building programming and events

• Student Support & Advocacy

- Helping students navigate non-academic issues
- Providing wraparound support to address barriers and concerns while supporting academic success

Student Support & Advocacy

We help with non-academic issues, that may get in the way of being successful student, such as:

- Physical or mental health issues
- Family emergencies
- Interpersonal issues with faculty
- Concern or worry about a friend
- Referrals to Student Disability Services

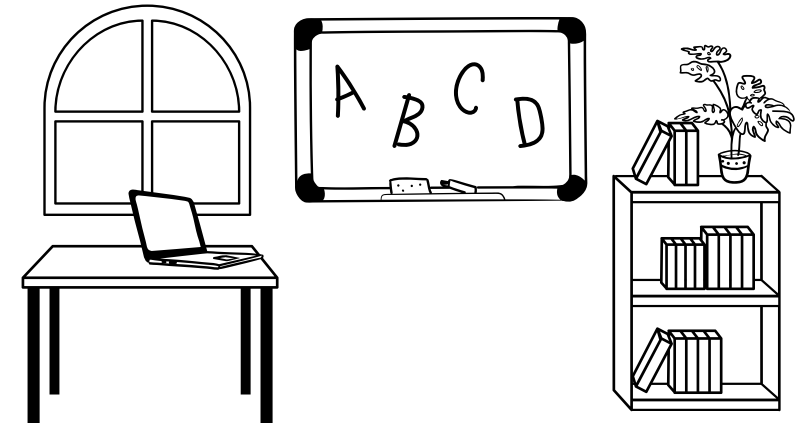
Engineering Student Affairs



Megan R. Barrett, Assistant Dean of Engineering Student Affairs

Mbarrett@jhu.edu

- **General Email:** WSEStudentAffairs@jhu.edu
- **Website:** <https://engineering.jhu.edu/studentaffairs/>



Enrollment Forms / Email / Teams

Summer 2026

Enrollment Forms (commuter)



1. Commuter Information
2. Emergency Contacts
3. Over the Counter Medications
4. Health History
 - Upload immunization record
 - Includes information about Accommodation Requests
5. Health Insurance
 - Upload copy of card
6. Healthcare Providers
7. Authorizations
 - Withdrawal and Refund Policy
 - Waiver – In-Person Program
 - Authorization to Disclose Pandemic-Related Health Status
 - Video and Photography Release
 - Confirmation of Health Insurance Coverage
8. Authorization for Treatment and Release of Medical Information
9. FERPA Release of Information – Minor
10. FERPA Recording of Virtual Class Sessions
12. Commuter Student Expectations
13. COVID-19 Expectations for Commuting and Residential Students
14. Time Management
15. Acknowledgement of Codes of Conduct

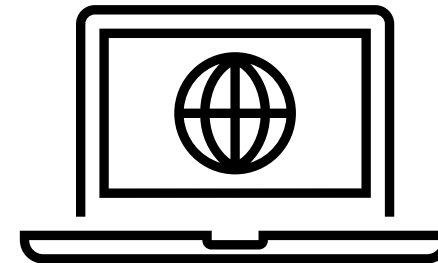


Email

- Johns Hopkins University's student email system is based on Microsoft Outlook.
- To access your Microsoft Outlook email from your smartphone or tablet, we recommend that you download the Microsoft Outlook App. When you are asked for your login information, use your JHED@JH.edu (not@jhu.edu) as the username.
- Can also be accessed through myJH (<https://my.jh.edu/>)
- **Start checking your Hopkins email account regularly as of today!**

Course access

- You can access Canvas using your JHED and password through Canvas at JHU main page starting the Friday before the course is set to begin: <https://canvas.jhu.edu/>



APL Commuters

Summer 2026



APL Commuter



11091 Johns Hopkins Rd; Fulton, MD 20759

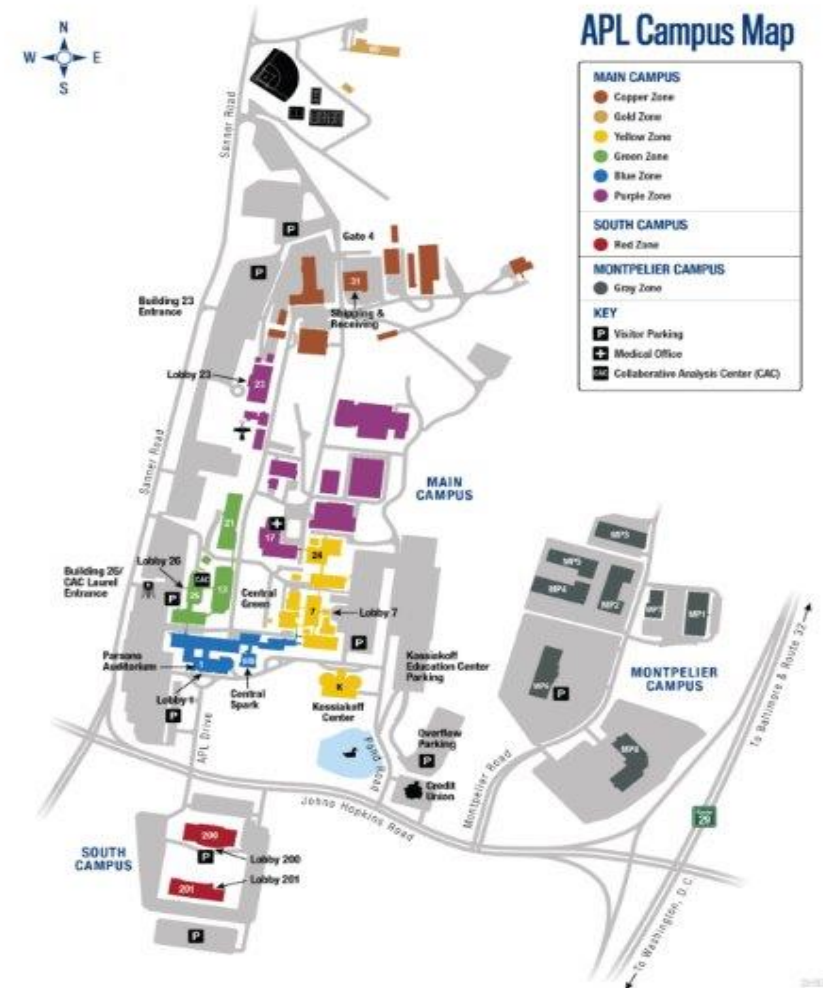
South Campus - Building 201

APL STEM Center - located on the first floor

- **First Day:** The instructor will meet you at the first-floor security desk.
- Mon – Fri: 9am – 3pm; No class on July 3rd
- Free parking available adjacent to Building 201

Students are not supervised before and after class and during the lunch period.

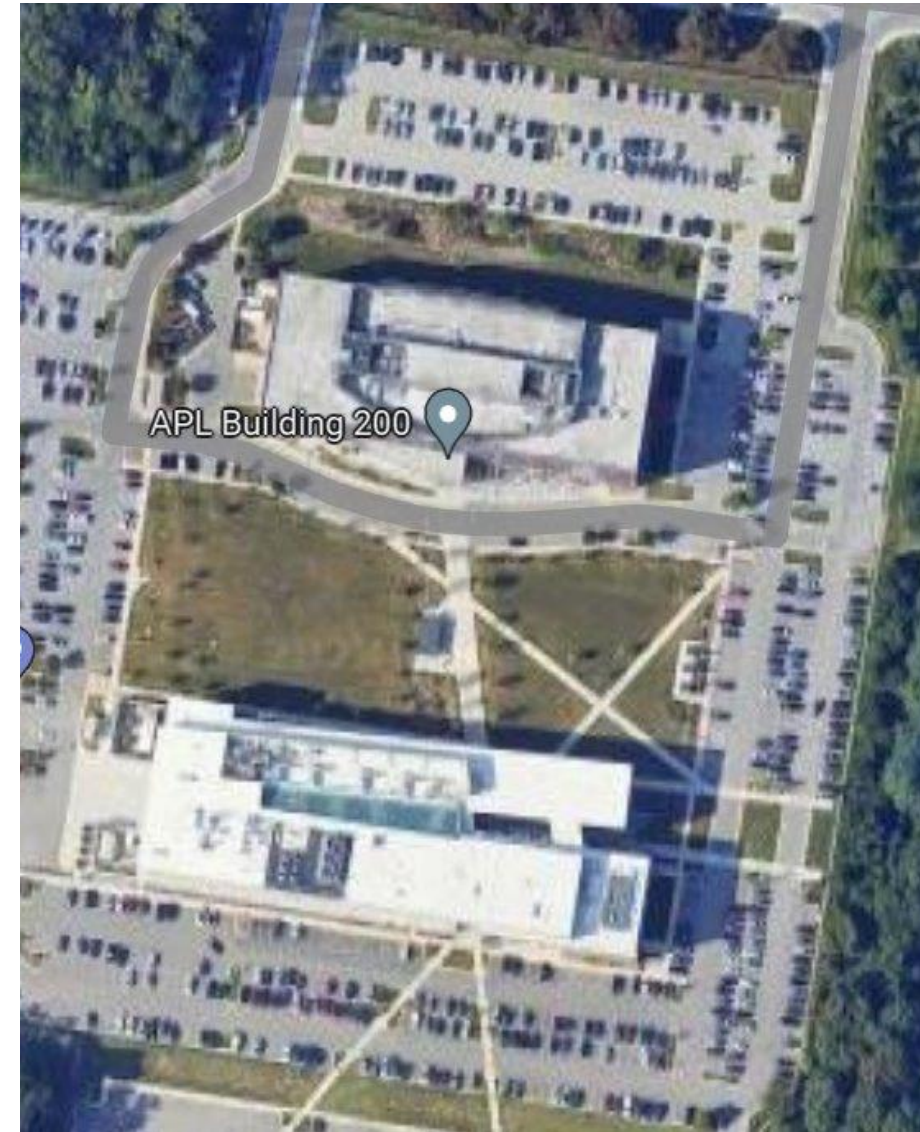
Main Campus Map



APL Commuter



- Bring a laptop, notebook, pens/pencils, and a calculator to class.
 - Chromebooks will not work on campus
- **Lab days for EEI students...** Closed-toe shoes are required and, on the chemical processes lab day, students must wear long pants and a long-sleeved shirt.
- **Weekly Schedule**
 - 9:00 – 12:00 PM Morning Academic Session
 - 12:00 – 1:00 PM Lunch
 - 1:00 – 3:00 PM Afternoon Academic Session
- *Evenings: 1 to 2 hours of homework



APL Commuter - Lunch



There will be about an hour for lunch each day. Students may bring lunch from home or purchase from the Starbucks Café or the Cafeteria. The Starbuck Café and cafeteria are cashless operations.

Students are not supervised before and after class and during the lunch period.

Students are not permitted to leave the APL campus for lunch



Libraries



- Online access to JHU Sheridan Libraries for all students
<https://www.library.jhu.edu/>





JHU APL

- Sign up for alerts at [My.JHU.edu](https://my.jhu.edu). Update information in myProfile, select APL Campus as Primary Campus

JHU APL

- Security station is adjacent to classroom.



Health and Medical



Students requiring medical assistance will be escorted to a local urgent care facility or a hospital.

First Call Medical Center

10981 Johns Hopkins Road

Laurel, MD 20723 410-694-7999

Mon – Sun. 8am-10pm

Howard County General Hospital

5755 Cedar Ln, Columbia, MD 21044 410 740-7890

24 hours / 7 days

Sign Out Process (commuters)



- A parent/guardian contacts the Engineering Innovation office via email at ei@jhu.edu in advance if the student needs to leave class early.
- The student checks out with Engineering Innovation instructional staff before leaving.

Last Day Activities



- 10:00 AM
 - EEI - Spaghetti Bridge Ceremony
- 11:45 AM
 - Informal luncheon

Programming ends at 12:00pm.
Students can start making
arrangements to depart for home after
12:00pm.





JOHNS HOPKINS

WHITING SCHOOL
of ENGINEERING

ei.jhu.edu

ei@jhu.edu