



JOHNS HOPKINS
WHITING SCHOOL
of ENGINEERING

Engineering Innovation Pre-College Programs

The Future is Yours

AGENDA

- 1 Why JHU?
- 2 Overview of Programs
- 3 Admissions
- 4 Deadlines



THE JOHNS HOPKINS UNIVERSITY

WHY JHU?

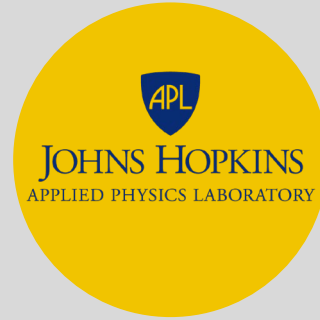
JOHNS HOPKINS UNIVERSITY



In National Universities
Ranked by
*U.S. News
& World Report*



America's first
research university



Associated with the
Johns Hopkins University
Applied Physics Laboratory



Pursuing knowledge
and discovery for the
benefit of the world



OVERVIEW OF PROGRAMS

PROGRAMS

- Developed by JHU Faculty
- Earn College Credit
- Test and solve real-world problems
- Hands-on projects and labs
- 12:1 student:teacher ratio

1

Explore Engineering Innovation

2

Biomedical Engineering Innovation

3

Sustainable Energy Engineering

4

Intro to Python

EXPLORE ENGINEERING INNOVATION



Variety of Disciplines

Chemical
Electrical
Materials Science
Civil
Mechanical



Variety of Modalities

Online (5-weeks)
Residential (4-weeks)
Commuter (4-weeks)
Hybrid (4-weeks)



Daily Class Meetings

Online: 3 hrs synchronous
In-Person: 9am – 3pm

Credit and Grading Info

3-credits
Letter or S/U grading option



Locations across the US

See website for full list

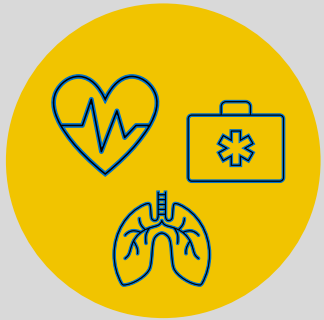
STUDENT TESTIMONIAL



The greatest effect overall that EEI had on me was that it confirmed and further cultivated my interest in the creative, problem-solving aspect of engineering... After EEI, I knew engineering was the right field for me.”



BIOMEDICAL ENGINEERING INNOVATION



Introduction to BME
Solve biological,
physiological,
and/or medical problems



Online
6-weeks
Mostly asynchronous
Not self-paced



Optional Study Sessions
2-3 times each week
Credit and Grading Info
3-credits
Letter or S/U grading option



Three required meetings
Independent project design
reviews

STUDENT TESTIMONIAL



BMEI challenged me to think critically every single day. No matter the material, the instructors and assignments consistently challenged me to think on a deeper level than any courses I've ever taken... there is an incredible sense of accomplishment that I really have not experienced anywhere else.”



SUSTAINABLE ENERGY ENGINEERING



Energy

Production/Policy

Study science and engineering behind current methods of energy production



In-Person

4-weeks

Residential
Commuter



Daily Class Meetings

9am - 3pm

Credit and Grading Info

3-credits

Letter or S/U grading option



Locations in across the US

See website for full list

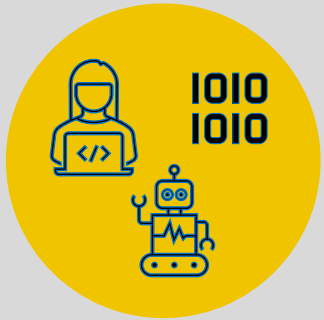
STUDENT TESTIMONIAL



For me, engineering isn't just math and science and solving problems. It also involves social and economic aspects like marketing, budgeting, and politics. Because it includes so many things, engineering is a very important thing in society because you're not just solving math problems, you're actually changing the world with things that you're doing."



INTRO TO PYTHON



Introduction to Python
Learn basics of
programming in Python



Online
Mostly asynchronous
Not self-paced



Optional Study Sessions
Once a week

Credit and Grading Info
1-credit
S/U grading



Six-weeks



ADMISSIONS

APPLICATION

- Short Essays
- Teacher Recommendation
- Transcripts
- Test Scores (English proficiency only)



ELIGIBILITY

- Open to current high school students and recently graduated seniors
- A's and B's in high school math and science classes
- Successfully completed Algebra II
- Additional course-specific math and science requirements



PROGRAM DATES

Explore Engineering Innovation

- In-Person: Four weeks
- Online: Five weeks
- Mixed Modality: Two weeks remote then two weeks on campus

Biomedical Engineering Innovation

- Online: Six weeks

Sustainable Energy Engineering

- In-Person: Four weeks

Intro to Python

- Online: Six weeks



PROGRAM COSTS

In-Person Fees:

- Application Fee
- Tuition
- Residential Fees
- Commuter Lunch Fee

Online Fees:

- Application Fee
- Tuition
- Lab Kit Purchase (EEI & BMEI Only)





DEADLINES



JOHNS HOPKINS

WHITING SCHOOL
of ENGINEERING

Engineering Innovation

ei.jhu.edu

ei@jhu.edu